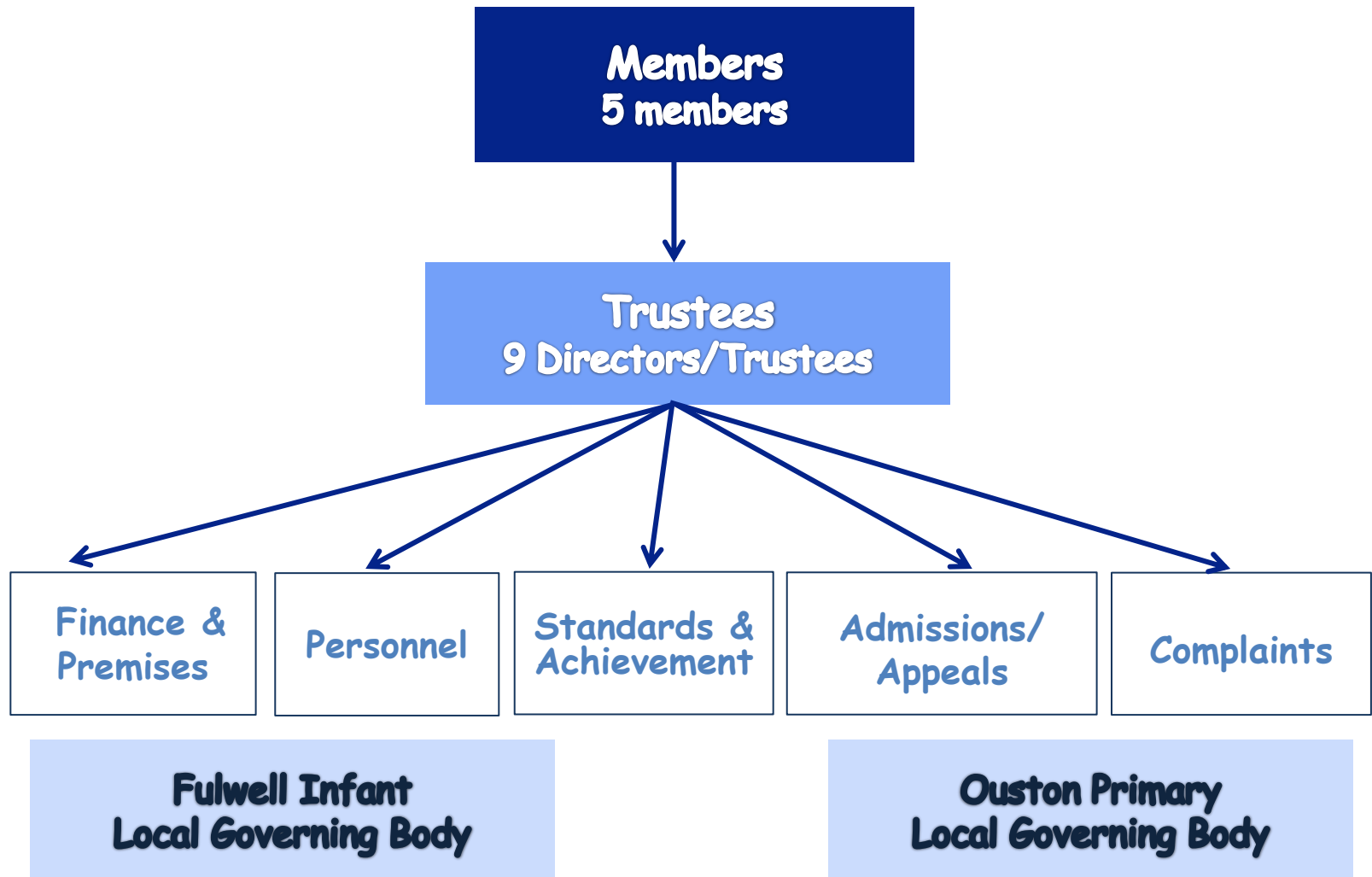


## Jigsaw Learning Trust Governance Structure



## JIGSAW LEARNING TRUST MEMBERS & TRUSTEES

The Directors/Trustees of Fulwell Infant School Academy exist to support and advise the Head teacher and her team in running the school for the benefit of the education and the enjoyment of its pupils, to provide a productive and creative workplace for its staff and a happy healthy environment for all. The role of Director/Trustees is to ensure the strategic direction and performance of the school continues to reflect the high standards we have set ourselves.

Body	Name	Role	Appointment / Resignation	Term of Office
Jigsaw Learning Trust Members	Anthony Kingston	Member - Chair of Trust	Jan 16	Ongoing
	Lynn Culkin	Member	Jan 16	Ongoing
	Ben Middleton	Member	April 16	Ongoing
	Louise Kennedy	Member	April 16	Ongoing
	Kathryn Barrass	Member	April 21	Ongoing
Jigsaw Learning Trust Directors	Anthony Kingston	Member - Chair of Trust	Sep 17	Ongoing
	Doug Green	Chair of Governors	Dec 20	Ongoing
	Hilary Akien	Vice Chair (temp acting as Chair)	Sep 14	Ongoing
	Wendy Angus	CEO/Headteacher (Fulwell)	Dec 12	Ongoing
	Kenneth Hern	Member Appointed	Jan 16	Ongoing
	Glen Batten	Member Appointed (temp acting as Vice Chair )	Nov 16	Ongoing
	Tony Jackson	Parent Governor	May 15	Ongoing
	Louise Lavelle	Head Teacher (Ouston)	Feb 18	Ongoing
	Kathryn Barrass	Chair of Governors (Ouston)	Feb 18	Ongoing

**JIGSAW LEARNING TRUST**  
**Fulwell Infant Local Governing Body**

<b>Body</b>	<b>Name</b>	<b>Role</b>	<b>Appointment / Resignation</b>	<b>Term of Office</b>
Fulwell Infant School Academy Local Governing Body	Doug Green	Chair of Governors	Oct 20	4 Year
	Hilary Akien	Vice Chair	Oct 20	4 Year
	Wendy Angus	Head Teacher (AO)	Dec 12	On going
	Theresa Hope	Staff Governor (FD)	Feb 18	4 Years
	Eve Dunbar	Staff Governor	Oct 20	4 Years
	Janet Colclough	Staff Governor	Oct 20	4 Years
	Hilary Hartnack	Patron	Dec 20	1 Year
	Dr Rachel Roberts	Co opted Governor	Oct 20	4 Years
	Leona Burtoft	Parent Governor	Feb 18	4 Years
	Clare Lister	Parent Governor	Nov 20	4 Years

**JIGSAW LEARNING TRUST**  
**Ouston Primary Local Governing Body**

<b>Body</b>	<b>Name</b>	<b>Role</b>	<b>Appointment / Resignation</b>	<b>Term of Office</b>
Ouston Primary Local Governing Body	Kathryn Barrass	Chair of Governors	Feb 18	4 Years
	Philip Barrass	Co-opted	Feb 18	4 Years
	Louise Lavelle	Headteacher	Sep 07	Ongoing
	Joanne Wise	Staff Governor	Feb 18	4 Years
	Jean Laws	Co-opted	Feb 18	4 Years
	Grant Mackie	Co-opted	May 19	4 Years
	Lewis Pendleton	Parent Governor	Feb 18	4 Years
	Isobel Bage	Parent Governor	Feb 18	4 Years
	Suzanne Butler	Parent Governor	Feb 18	4 Years
	Lisa Ewart	Parent Governor	Feb 18	4 Years
	Vanessa Cooper	Parent Governor	May 19	4 Years