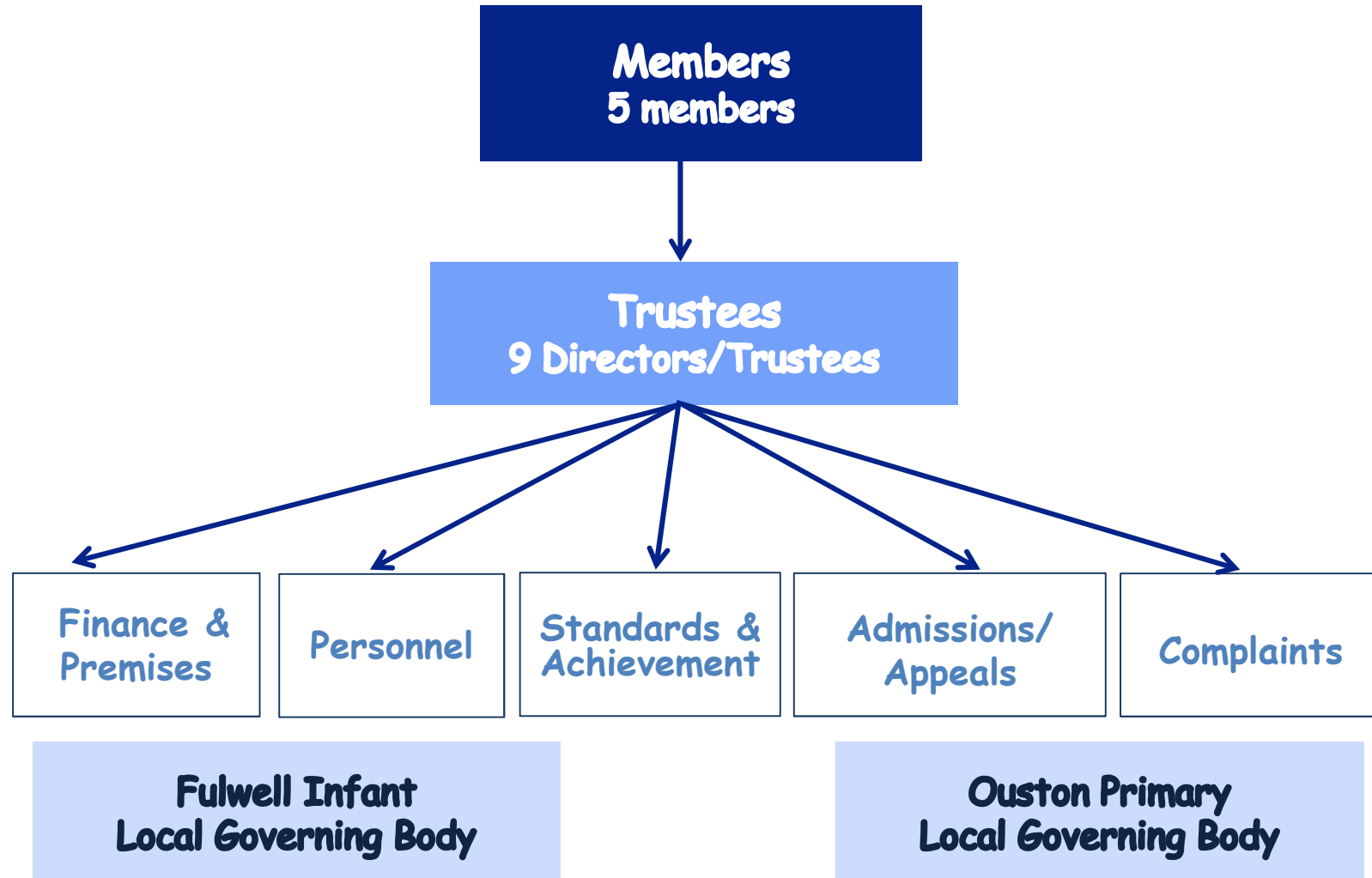


Jigsaw Learning Trust Governance Structure



JIGSAW LEARNING TRUST MEMBERS & TRUSTEES

The Directors/Trustees of Fulwell Infant School Academy exist to support and advise the Head teacher and her team in running the school for the benefit of the education and the enjoyment of its pupils, to provide a productive and creative workplace for its staff and a happy healthy environment for all. The role of Director/Trustees is to ensure the strategic direction and performance of the school continues to reflect the high standards we have set ourselves.

Body	Name	Role	Appointment / Resignation	Term of Office
Jigsaw Learning Trust Members	Anthony Kingston	Member	Jan 16	Ongoing
	Lynn Culkin	Member	Jan 16	Ongoing
	Ben Middleton	Member	April 16	Ongoing
	Louise Kennedy	Member	April 16	Ongoing
	Kathryn Barrass	Member	Sept 21	Ongoing
Jigsaw Learning Trust Directors	Anthony Kingston	Director	Sept 17	4 Years
	Doug Green	Chair of LGB	Dec 20	4 Years
	Hilary Akien	Chair of Trust - Chair of Trust	Sept 22	4 Years
	Wendy Angus	CEO/Head teacher (Fulwell)	Dec 20	4 Years
	Kenneth Hern	Member Appointed	Jan 20	4 Years
	Glen Batten	Member Appointed (temp acting as Vice Chair)	Nov 20	4 Years
	Tony Jackson	Parent Governor	May 19	4 Years
	Louise Lavelle	Head Teacher (Ouston)	Feb 22	4 Years
	Sally Green	Trust Appointed	Dec 21	4 Years